

SY230NT -PV4/SV4

Multi-Door Controller

SY230NT serial controller
backward compatible
SY210NT-V4A/V4B serial controller.

▼ SY230NT-SV4
(LCM case)



► SY230NT-PV4
(PCB)



SYRIS

ACCESS Controller
SYRIS Security System

Feature

- Stand alone or Networking system.
- Built-in Anti-Tamper protection / Buzzer.
- Use LCD display reader can show card holder name. (English: 12 Char word or Chinese:6 Char word)
- Advanced programmable functions for different level within groups to maximize management control.
- Support multiple proximity, keypad, biometrics, smart card and RS485 / wiegand reader.
- Versatile software features support wide range functions.
- Capability of connecting external backup power supply for emergency.
- Can be off-line use or on-line use.
- Externally programmable interface.



► Ordering Information

Item	Type
■ SY230NT2-SV4	2 Door Controller(LCM case)-V4
■ SY230NT4-SV4	4 Door Controller(LCM case)-V4
■ SY230NT2-PV4	2 Door Controller(PCB)-V4
■ SY230NT4-PV4	4 Door Controller(PCB)-V4

Copyright © 2012 SYRIS Technology Corp.

Specification

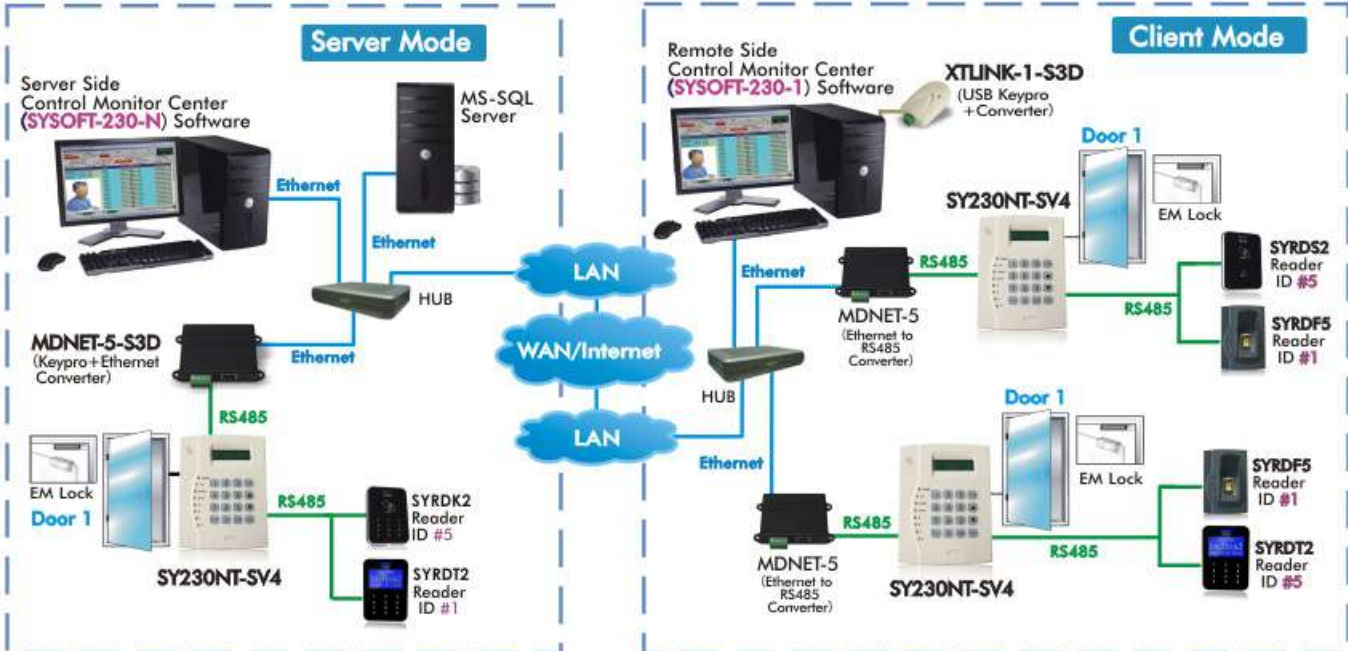
Specs / Item	SY230NT2-		SY230NT4-	
	SV4	PV4	SV4	PV4
Door Control	2 Doors		4 Doors	
Number of Reader	4 (2 In / 2 Out)		8 (4 In / 4 Out)	
Capacity of Records	4,100			
Number of Cards	9,999			
Communication	RS485 x 2 · Wiegand x 2/4			
Relay Output	2 Relays		4 Relays	
Input Points	Normally 4		Normally 8	
	DI 5~ DI 8 shared with W3~ W4, expandable to 128			
Wiegand Input Points	2		4	
	compatible with 26/32/34/35/37/42/50/66 bits			
Baud Rate	19,200 bps (4,800 ~ 115,200bps)			
Timer / Timer Zone	32 Time / 60 Time Zone			
Group and APP Set / Holidays	64 Group / 366 Holidays			
Controller ID	01~99(SYW95A) / 0001~9999(SYSOFT-230)			
Anti-Passback	Up to 3 level of local control or group Anti-passback (through the site)			
LCD Display	16X2 Char / 8X2 Char(PCB)			
Keypad	16 Keys			
LED Indicator	8 LED			
Beep Tone	Built-in Buzzer (Max 0.5W)			
Operating Temperature	-20°C ~ +70°C			
Storage Temperature	-40°C ~ +80°C			
Input Voltage	8V~24V DC / 0.5~2.5W			
Dimensions (WxHxD)	PV4	PCB	122.5 x 117 x 25mm	
	SV4	LCM case	137 x 180 x 54mm	

❖ This specification is preliminary and subject to change without prior notice.

SY230NT-PV4/SV4

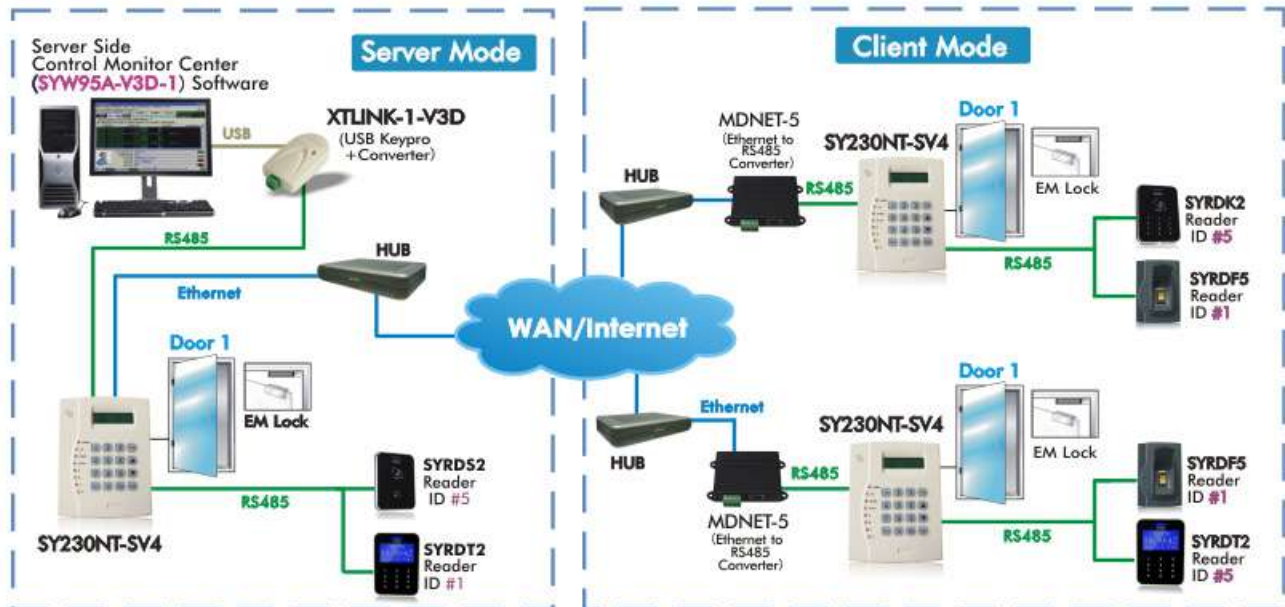
Multi-Door Controller

SYSOFT-230A Serial System Network Diagram



- With this kind of connection, the number of all connected controller is 9,999.

SYW95A Serial System Network Diagram



- With this kind of connection, the number of all connected controller is 99.

Copyright © 2013 SYRIS Technology Corp.

